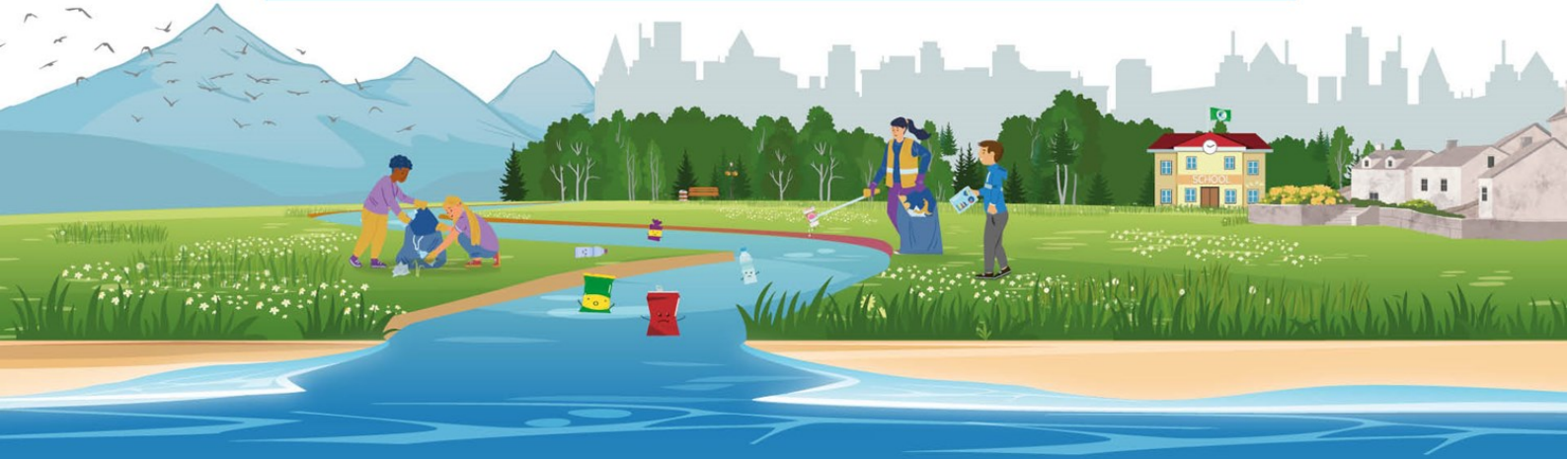


Upstream Battle[®]

Marine Litter Art Competition



About the competition:

We are asking young people across Tayside to research the 'source to sea' pathway of marine litter and explore how litter in their community could end up as marine litter in the sea.

Following their investigations, we invite participants to represent their thoughts through an artistic medium, such as sculptures, paintings, photographs, video, stories or poetry. The more imaginative, the better!

The competition is open to early years, primary and additional support needs establishments, as well as uniform or community groups working with this age group in Tayside local authority areas of Perth and Kinross; Dundee and Angus.

A Celebration Exhibition event will be held on the 20 March 2024 for all the entries.

The project is an ideal opportunity for pupils to engage in Learning for Sustainability and the UN Sustainable Development Goals, clear connections can also be found across the Curriculum for Excellence Experiences and Outcomes and STEM learning. Schools undertaking their [Eco-Schools Green Flag Award](#) journey may also wish to use the project as part of their work on the programme's [Litter & Waste](#) or [Water](#) Topics.

The submission deadline is 5pm Friday 12 March 2024

Find out more!



What do you need to do?

There is a short [video presentation](#) for use in class or assembly with background information on source to sea marine litter and introduce the competition tasks, but please refer to this guide for full information.

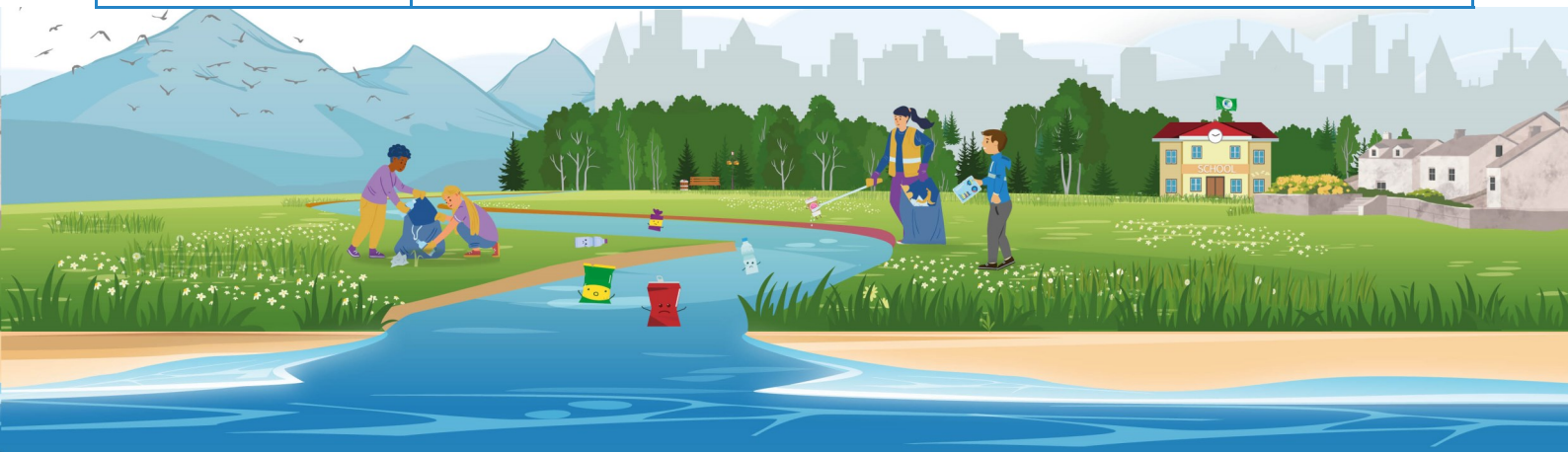
Activity	Task	Suggested time
Litter Survey and Investigation	<p>Measure litter levels in your school grounds or local area to investigate types and sources of litter in your community.</p> <p>You could use photographs or maps as part of your investigation.</p> <p>Complete an Upstream Battle litter survey or large -format survey for younger ages and upload your results to the CleanUp Scotland online data portal.</p>	2 – 3 hours
Source to Sea pathway	<p>Draw a map or flowchart of your local litter pathway to show how litter gets from source to sea.</p> <p>This could simply be a diagram of the school area to show movement of litter to drains and streams, or something more complex, such as a report on the results from your Litter Investigation.</p>	1 hour
Make a Pledge	<p>As a class, pledge one action to carry out as individuals, as a school, and at home to help tackle the problem of marine litter.</p> <p>Think about how you could include your pledge in your artwork raise awareness of source to sea litter.</p>	Up to 30 minutes
Create your Masterpiece	<p>As a class, create a piece of art which helps to explain the problem of marine litter or that explains what you will do to help solve it.</p> <p>Refer to the design brief and competition guidance on the next page</p>	3 - 4 hours



Design brief

Your artwork can take any form you wish - models, sculptures, photographs, video or poetry – are all accepted, however, there are a few key principles it must comply with:

Design principle	Details
<p>Waste Reduction</p>	<ul style="list-style-type: none"> Your artwork must reuse existing materials, such as paper, plastics and metal. You cannot buy anything especially for the competition, as that defies the principle of waste reduction. <p>Top tip: if you have limited resources at school, why not ask pupils to bring in materials from home or ask the community for help</p> <ul style="list-style-type: none"> You can use litter collected as part of your Litter Survey, however, please ensure this is thoroughly cleaned beforehand and only use non-hazardous materials. See the "Guide to staying safe" section on our Clean Up Scotland document.
<p>Reuse and Recycle</p>	<ul style="list-style-type: none"> If a physical piece, you must ensure your artwork is able to be recycled afterwards. This is one of the key aspects of the STEM challenge, as you must identify a way to create your piece without using non-recyclable materials such as plastic-based craft products including Sellotape and PVA glue. <p>Top tip: why not make your own non-hazardous and eco friendly glue or try making natural earth paints.</p> <ul style="list-style-type: none"> If you collect any litter as part of your Litter Survey that is not contaminated and can be recycled, please do so, if it is not recyclable then dispose of correctly. Your artwork can be on display for as long as you wish, but we are trusting you to dispose of it sustainably when the time comes.
<p>Message and Story</p>	<ul style="list-style-type: none"> Your piece must convey your message about source to sea litter in a fun, creative and artistic way that will be understood by a range of audiences. <p>Top tip: use your artwork to raise awareness and empower action to tackle source to sea litter and help stop marine pollution</p>



Competition guidelines

Advice and guidance on the competition is detailed below, further details on the Exhibition Event will be sent out closer to the time and only to those who have [registered to take part](#).

- The artwork should be a collaborative piece i.e. one entrant per class/ year/ establishment
- Entries will be judged by a panel of Keep Scotland Beautiful staff, representatives of the Upstream Battle partners and a special guest, under four criteria:
 - Strength of source to sea message
 - Creativity/ originality in artistic response
 - Alignment with design brief
 - Detail of the investigation carried out
- The entry should be submitted with a short [report](#) explaining the project written by the coordinating staff member. This can also include any additional supporting evidence, including extra photos and information from the investigation.
- We would particularly like to see entries which engage with the wider community or inspire long-term action.
- All artworks should be self-contained and safe to be left standing. Consideration should be given to how the artwork will be transported and installed at the exhibition.
- Where there is a large response, the competition will be separated into age categories, so entrants are judged in comparison to peers.
- The Upstream Battle Art Competition in 2020 had 29 entries, involving over 600 pupils. Examples of the 2020 entries can be found on our [website](#). You may wish to use these as inspiration, but please note that not all of them comply with Design Brief for this year.
- **Submission deadline 5pm Friday 12 March 2024.** Entries must be high resolution photograph or video of the artwork - the largest file size possible to allow us to view it for judging. WeTransfer is useful for sharing larger files. Details closer to the time.

