

## Lochwinnoch Community Garden Group Portfolio 2025

### Introduction

'The village of Lochwinnoch is situated some 16 miles from Glasgow and sits nestled on the banks of Castle Semple Loch and the River Calder in Renfrewshire

A vibrant and welcoming village with excellent train links to Glasgow, Paisley and the Ayrshire coast and forms part of the National Cycle Network, route 7, with many people taking a well-earned break in the village!

Lochwinnoch has a rich industrial history from mining and mills to lemonade factories and furniture building, providing furniture at one point for The Titanic.

Within the village is the RSPB Reserve, Castle Semple visitor centre and county park with excellent water sport facilities including the annual Regatta.

Lochwinnoch is classified as a 'Festival Village' with its annual 'Art Festival' and 'Feel Good Festival' which attracts many visitors and locals alike.

Lochwinnoch enjoys a great sense of pride in its community with several groups working together to create an enjoyable environment for all who live there and the many visitors to the village'.

In 2013 a group of enthusiastic volunteers resurrected the Lochwinnoch Community Garden, which had sadly fallen into disrepair over a few years. Since then, we have become a keen passionate group who love working and developing the garden and sharing it with the community.

Gardening has long been proven to promote health and well-being, and, over the years, Lochwinnoch Community Garden has sought to provide a safe, welcoming space in the very heart of the village. Nestled behind the Parish Church. The community garden is now a well-established part of village life, providing seasonal planters and hanging baskets around the village, growing vegetables which are shared with and enjoyed by volunteers and the local Community Larder.

Who we are

## Meet some of the Team



Our Community Garden can be found behind our 220-year-old Parish Church which was recently purchased by the Lochwinnoch Community Development Trust.





## Horticulture Achievements

We grow plants and vegetables. Here is a sample of the vegetables that we grow: onions, leeks, tomatoes, cucumber, lettuce, peppers, courgettes, potatoes, cauliflower, broccoli, grape vines, blackberries, strawberries. We propagate most of our plants and vegetables from seed.



We produce and grow plants which we plant up into hanging baskets and supply to local businesses.

We also produce and grow plants which we use to plant up the large containers around the village and surrounding our War Memorial.



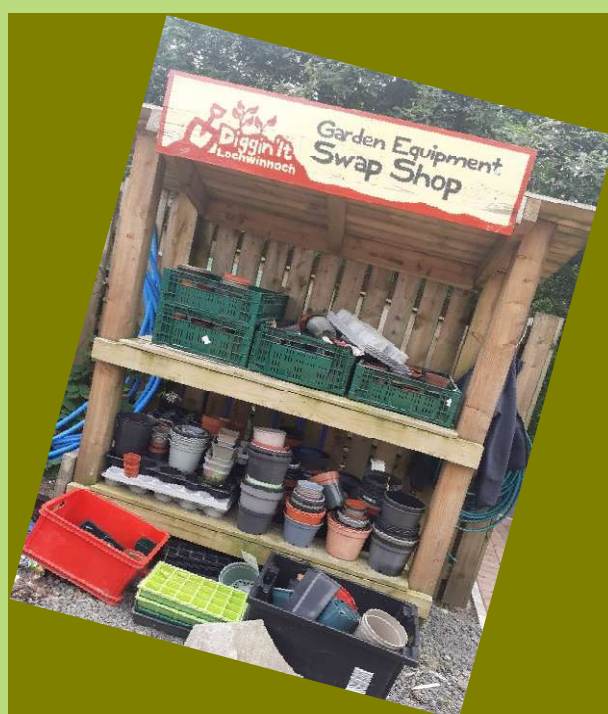
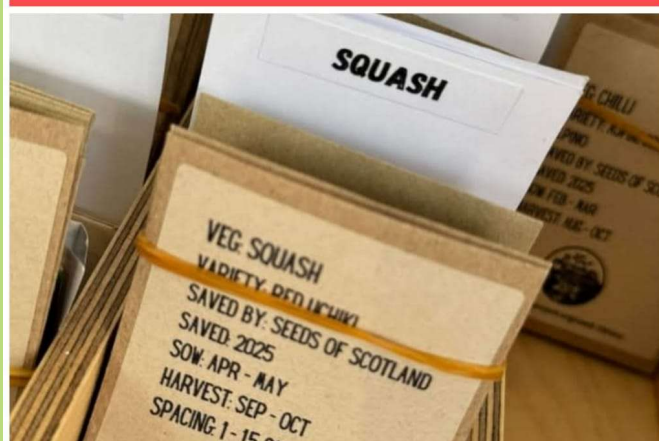


# GET GROWING

Join Diggin' It at Lochwinnoch Bowling Club for this event and get ready for vegetable growing this year.

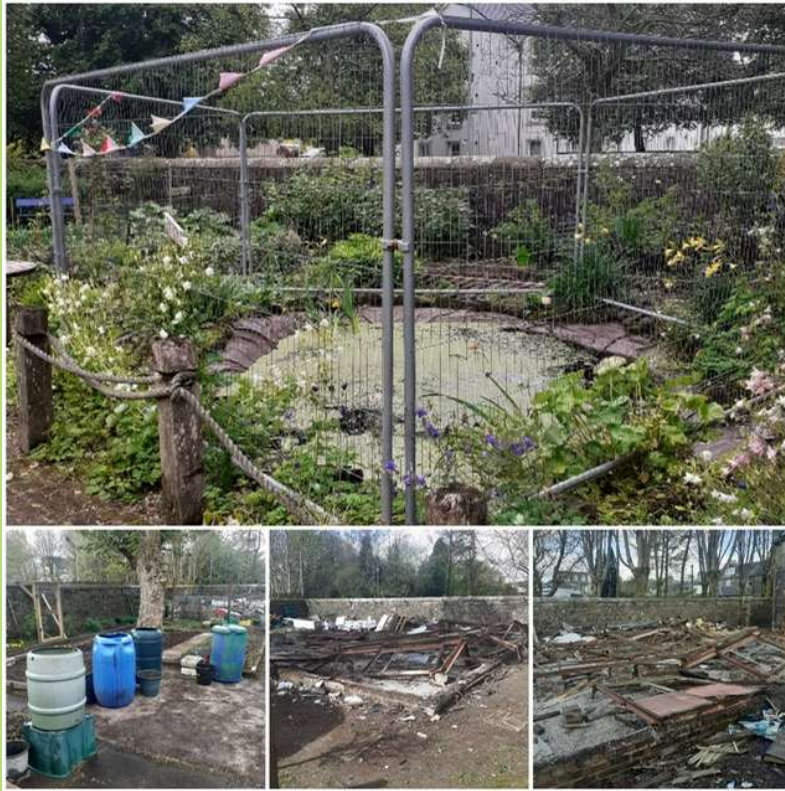
- Q&A WITH EXPERT VEG GROWER WILLIE THOMSON.
- POT UP SOME VEGGIE SEEDLINGS TO GROW AT HOME.
- CATCH UP WITH COMPOSTING GURU CAT TRAIN FROM PROPAGATE.
- JOIN BORA ZEBRANSKY AND SHELLEY OXLEY'S CREATIVE CORNER WITH FAMILY ACTIVITIES, INSPIRED BY PERMACULTURE PRINCIPLES.
- CREATE FLOWER/VEGETABLE BED SIGNAGE.
- DECORATE FAIRY DOORS AND MAKE FAIRY GARDEN FOLK PEG DOLLS.
- LEARN HOW TO PROPAGATE FRESH HERBS.
- MAKE A MINI PROPAGATOR USING RECYCLED MATERIALS TO TAKE HOME.
- FREE SEEDS TO TAKE AWAY.
- FREE TEAS AND COFFEES.

**DROP IN**  
11am - 4pm  
Sat 22nd Feb





## Environmental Responsibility



We are replacing the wildflower turf roof. We will be replacing the pond liner, and material for the paths that are environmentally friendly.







**Our Community Larder** redistributes surplus food from shops and supermarkets which is otherwise destined for landfill, reducing food waste and unnecessary food production. The Community Garden also supplies Larder with freshly grown vegetables.

This is dignified community food provision, for everyone, and is tackling climate change. But it's not just about the food - many really come for the human contact, and we encourage people to stay for a cup of tea and a chat. It is a friendly and inclusive space.

Partners and Sponsors:





## Community Participation



Lochwinnoch annually host a 'Feel good Festival'. This year's event ran from 15<sup>th</sup> – 20<sup>th</sup> May and offered a varied programme designed to lift spirits through creative, therapeutic and participatory activities and experiences, including a Wellbeing Fair, free kid's crafts and events, taster treatments, street food, samba, stalls and workshops. Several of this year's workshops were held in the Community Garden.











As part of the 'Lochwinnoch Feel Good Festival' a great time was had by all at the 'Teddy Bears Picnic', organised and hosted by the Community Garden.

Storytelling, petting zoo and free books for all, free event.



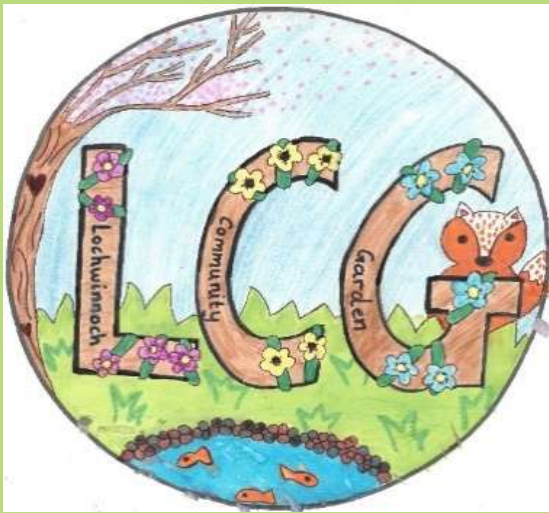


# Lochwinnoch ARTS FESTIVAL

The Lochwinnoch Arts Festival has been running for 25 years. Events take place in various venues around the village including the McKillop Institute, the Parish Church and the Community Garden.







The Community Garden hold an annual Open Day, this year it was held on 27th April.

The event consisted of:

- Sale of Community Garden plants.
- Product & plant sale from 'Shrubs to Suds', who are a local business that have established a line of products based on herbs and plants that they grow within the Community Garden.
- Live Music
- Hanging Basket workshops
- Teas & Coffees

The funds raised are a welcome income to support the upkeep and maintenance of the Community Garden.



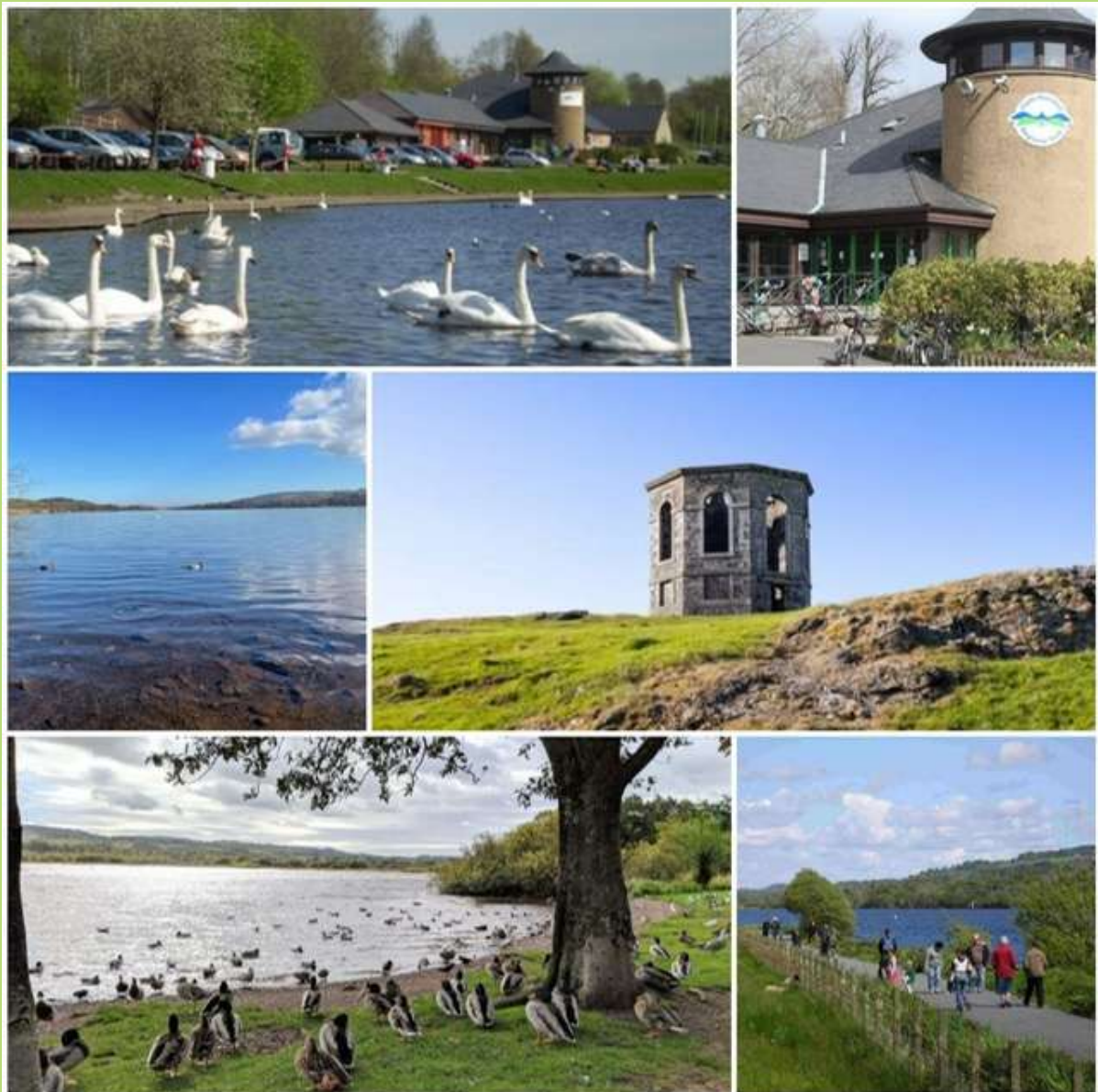


Lochwinnoch is a hub of social activities for all ages across our community and beyond. We are fortunate to have local access to:

- Castle Semple Country Park/Sports Centre
- Lochwinnoch Bowling Club
- Lochwinnoch Golf Course
- McKillop Institute where many social groups gather and classes, concerts and events are held.

### **Castle Semple Country Park/Sports Centre**

- Walk the Semple Trail
- Cycle Path
- Outdoor Activity Group Sessions & Courses
- Fishing Permits for coarse fishing on Castle Semple
- Resident Clubs onsite: Castle Semple Rowing Club, Castle Semple Sailing Club, West Coast Paddlers Kayaking, Clyde Windsurfing & SUP, St Winnoch Angling Club, Ride 63 Community Cycling Club
- Visitor Centre which houses the Semple Estate Historic Map & Exhibition and Café





## Lochwinnoch Bowling Club



## McKillop Institute



Plants for the containers are grown, planted and maintained by the Community Garden.



## Lochwinnoch Golf Club

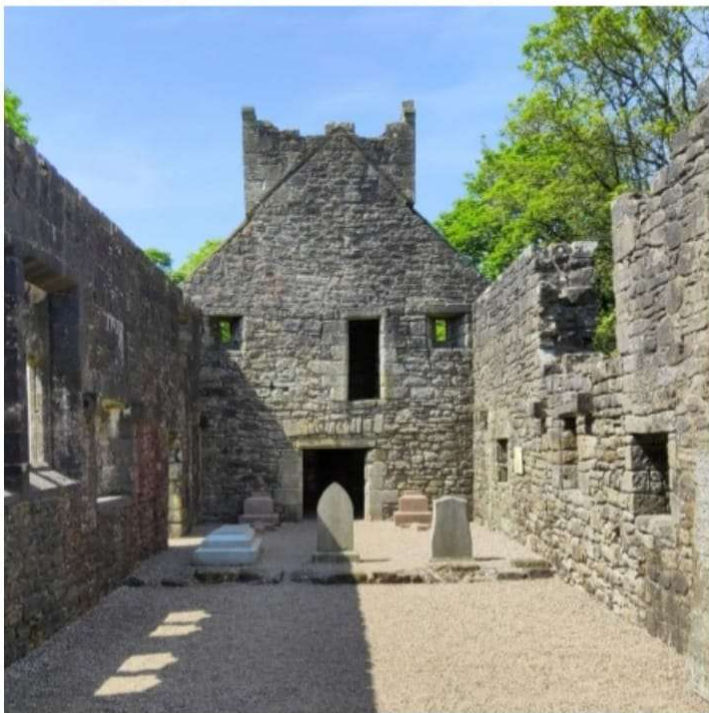


The Lochwinnoch Golf Club, which was founded in 1897, have supported Lochwinnoch Primary School plant wildflowers and bulbs at the golfclub. This project was a great success from both an educational exercise for the children as well as enhancing the wildlife environment and flora for the Golf Club. The project was funded and resourced by Lochwinnoch Community Garden.





## Places of interest in and around Lochwinnoch



- Auld Simon
- Calder Mill Falls
- The Old Bridge over the Calder
- The Collegiate Church
- War Memorial





**The Community Garden has had various streams of funding and income over 2024-2025:**

- £1700 flight path fund
- £2500 Robertson trust
- £250 Gala Day plant sale
- £140 Community Garden Open Day plant sale
- £500 Partnership grant (Renfrewshire Council)



## Proposed Itinerary

Arrival and introductions in Community Garden

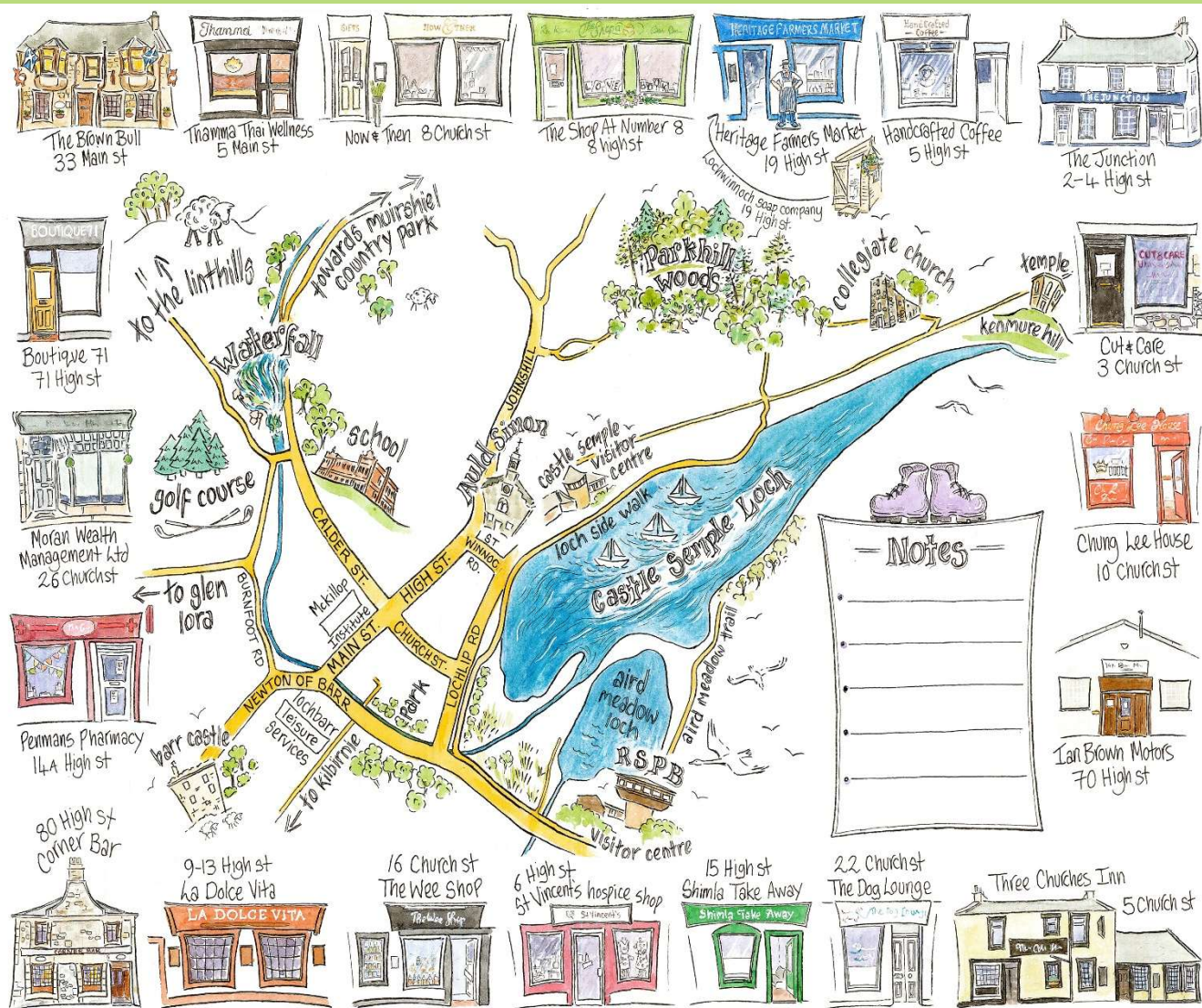
Presentation in Community Garden

Tour:

- Station
- RSPB
- Park/Annexe
- Castle Semple Sports Centre
- John's Hill View Point
- Old Simon
- Calder St veg growing (LEAP)
- Golf Club
- Drive by Loch Barr & up High Street to view planters & baskets
- Back to Community Garden and drop off car, the tour will continue by foot
- Community Larder
- War Memorial
- Parish Church
- Back to Community Garden

Tea and Media





Credit to local artist Laura Jackson for the above illustration of the village.



## Appendices

Facebook page <https://www.facebook.com/groups/1348490329400829>