

## Armadillo Masks

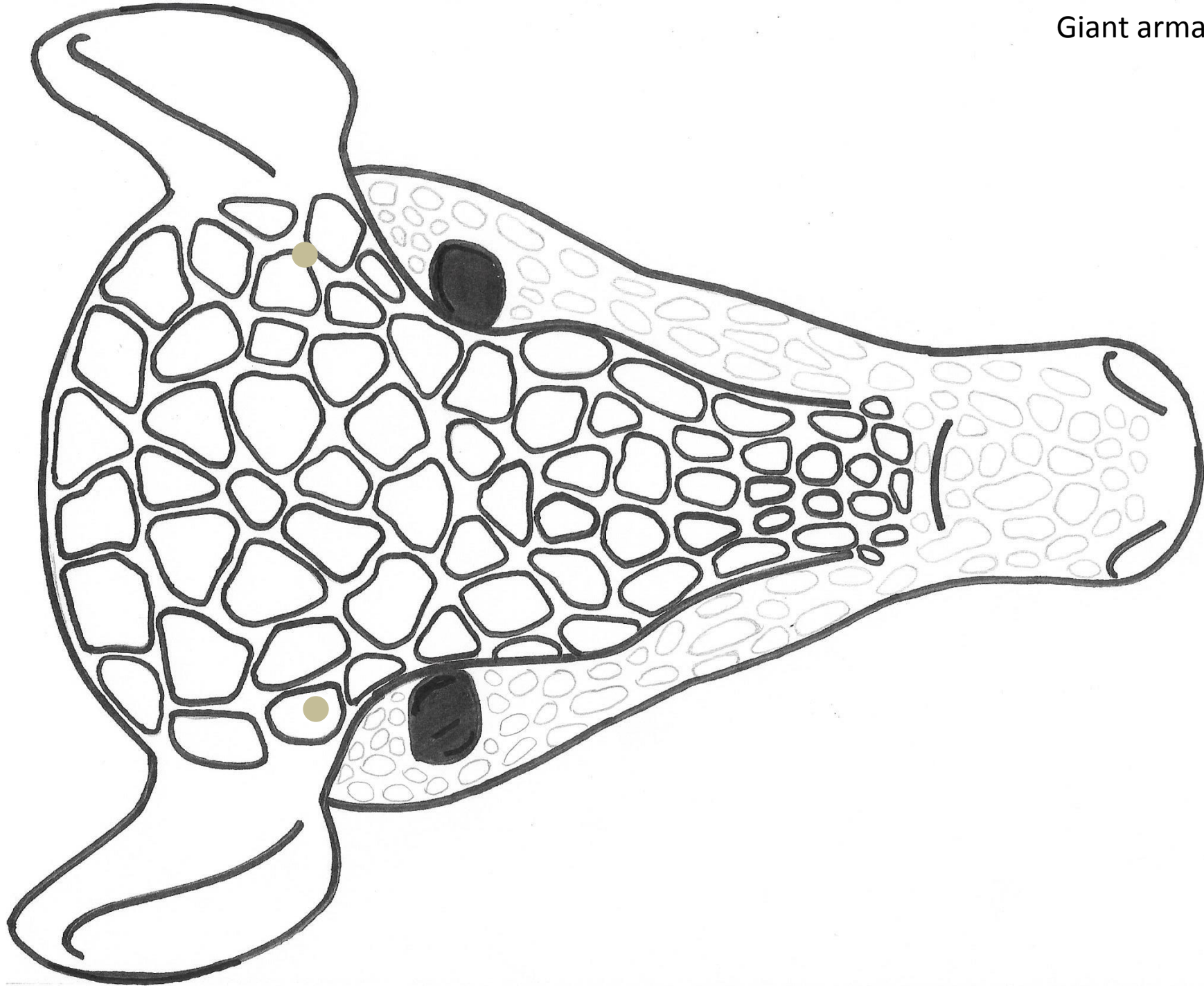
Cut out the mask.

Cut out the black eyes, so that guests can see through the eye holes.

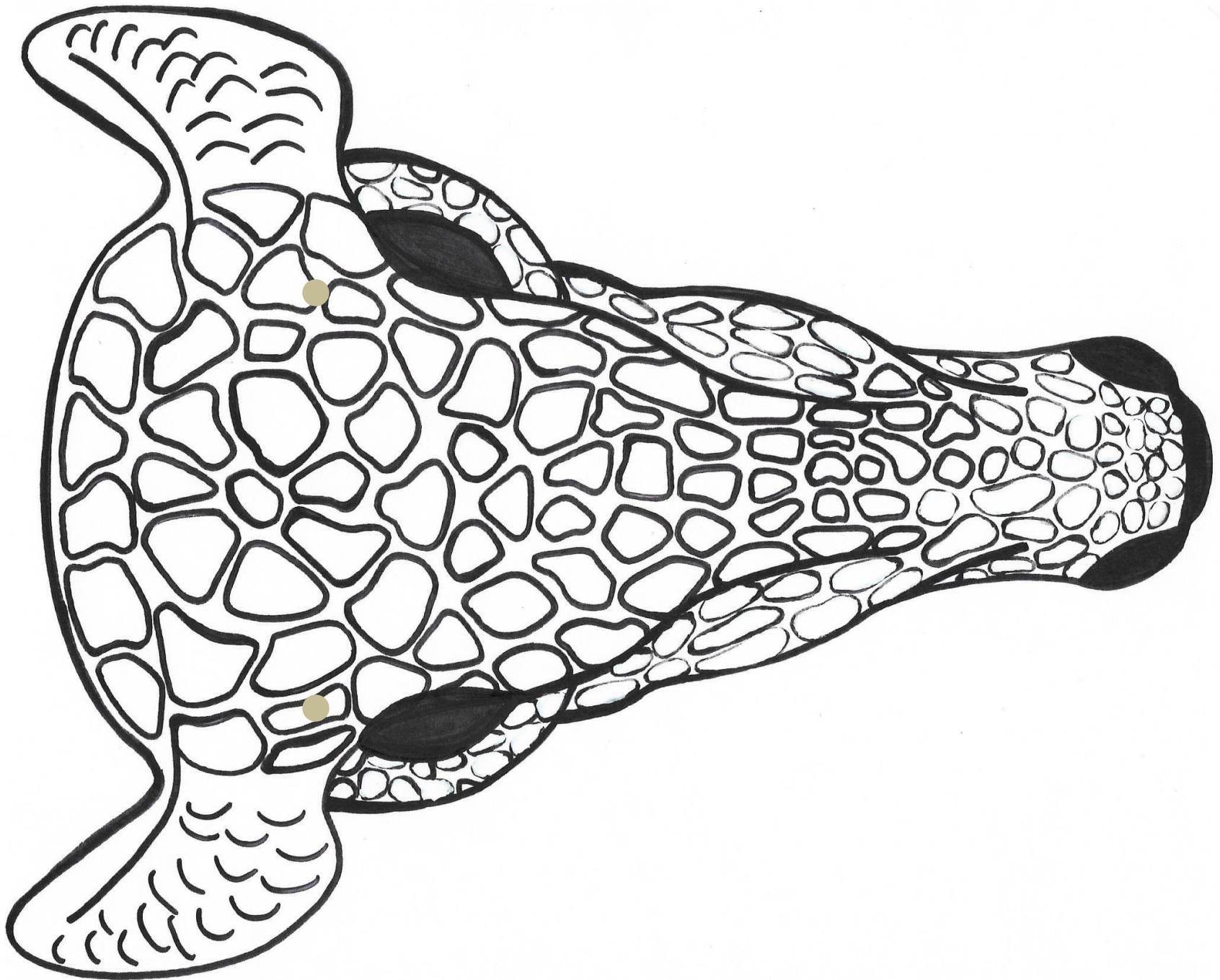
The three-banded armadillo mask provided does not have eyes on it because three-banded armadillos have eyes on the sides of their heads. Guests can cut eye holes where the dotted circles are located.

Punch holes where the small grey circles are located. Using string or elastic create straps so that guests can wear the masks. (Additional option: print masks on card stock and then tape/glue the mask to a popsicle stick, allowing guests to hold the mask up to their face.

Giant armadillo

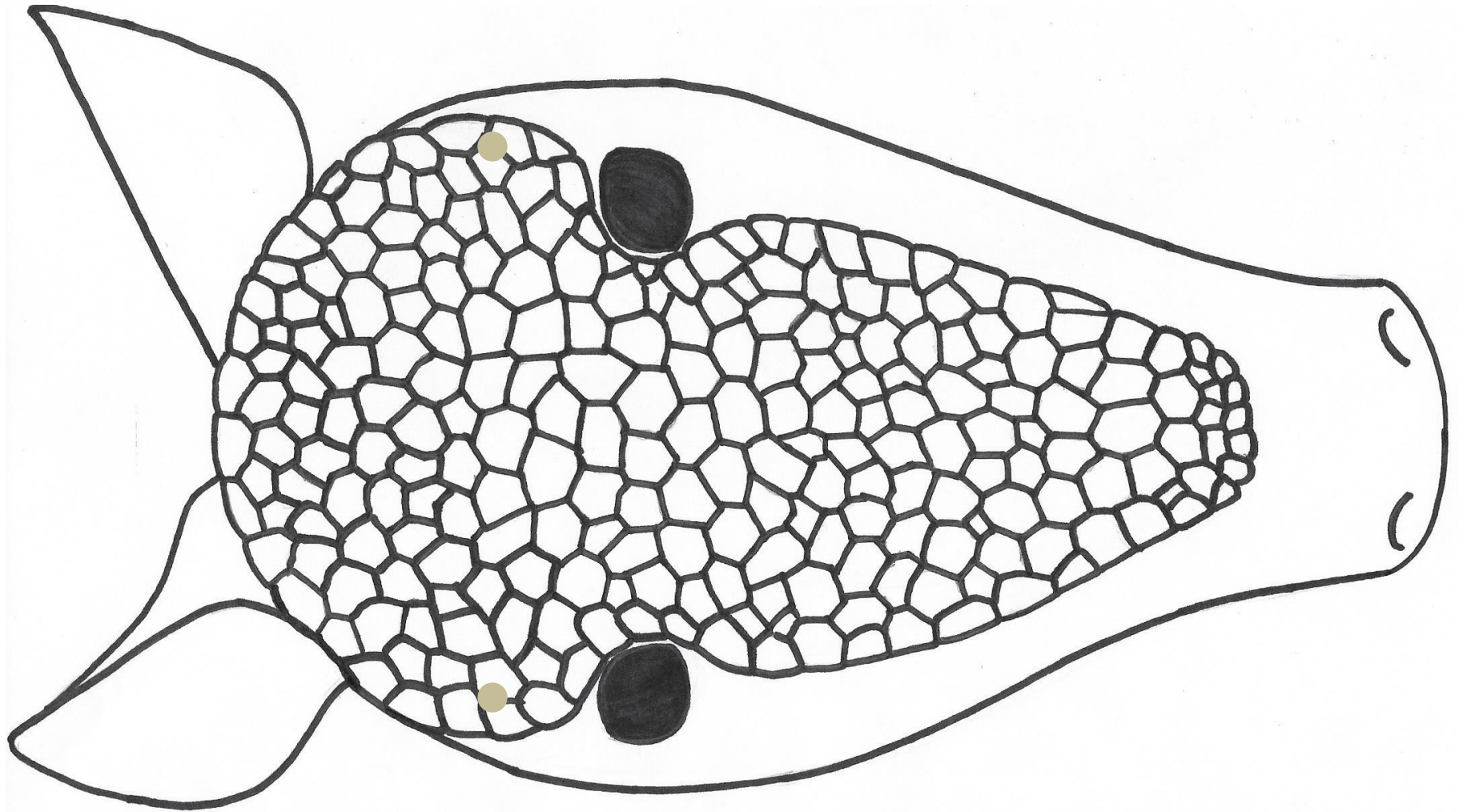


Giant armadillo

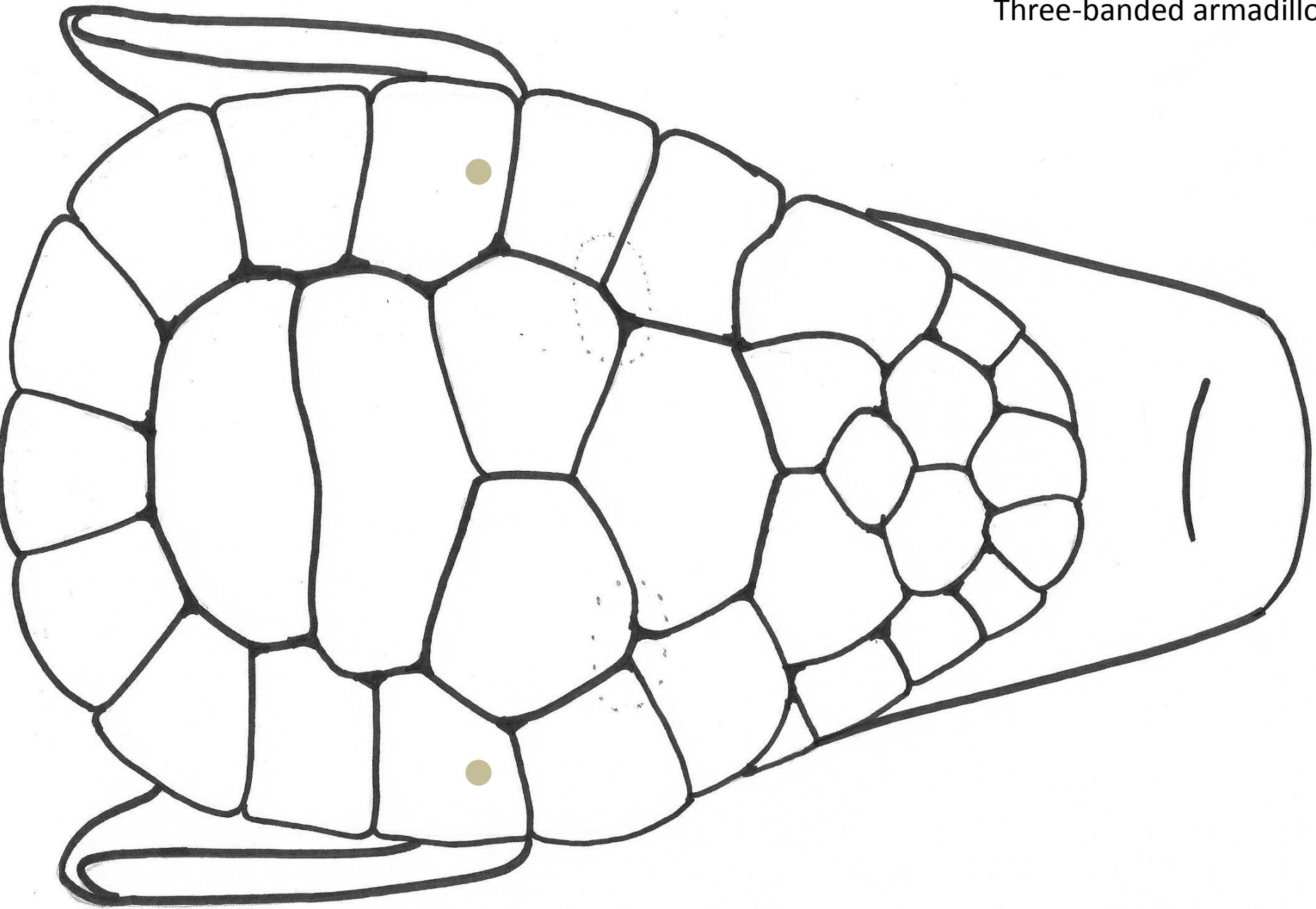




Nine-banded armadillo



Three-banded armadillo



Six-banded armadillo

